

WARNER ARTS MAGNET ELEMENTARY SCHOOL

An Arts STEAM Magnet School | 626 Russell Street | Nashville, TN 37206 | 615-291-6395



248 STUDENTS

92% Black/African-American
6% White, non-hispanic
2% Hispanic
2% Asian/Pacific Islander



30 FACULTY & STAFF



30 COMMUNITY PARTNERS

SERVES GRADES PRE-K-4 IN THE STRATFORD CLUSTER

- ☑ Open Enrollment
- ☑ Offers Bus Transportation
- ☑ Offers Before or After Care

ADMINISTRATION

Executive Principal: Dr. Ricki Gibbs II, 615.291.6395
ricki.gibbs@mnps.org

Dean of Instruction: Chenier Northern, 615.291.6395
chenier.northern@mnps.org

Administrative Ambassador: Keenan Robinson,
615.291.6395, keenan.robinson@mnps.org

Curriculum Specialist: Dr. Michael Thompson,
615.291.6395, michael.thompson@mnps.org

Site Coordinator: Jon Wren, 615.291.6395
jonathan.wren@mnps.org

School Board Representative: Christiane Buggs

 schools.mnps.org/warner-enhanced-option-elementary-school

 [@warnerartsmag](https://twitter.com/warnerartsmag)

 facebook.com/warnerartsmagnet

SCHOOL HIGHLIGHTS

- ★ The only Arts Magnet Elementary School with its own full-time Dance Program
- ★ The oldest elementary school in Nashville serving students and families since 1892
- ★ A historic building with its own Auditorium
- ★ A RTI-B School of Reward

DRESS CODE

Tops: Any solid color collared shirt.

Bottoms: Navy, black, white or khaki pants, shorts, skirts or jumpers

ACADEMIC PROGRAMS

Magnet, STEM, Enhanced Option, Arts

FEATURED EXTRACURRICULAR ACTIVITIES

Dance program for all grades led by MNPS' only fulltime elementary dance teacher, Chinese Drumming Instruction provided by the Chinese Arts Alliance of Nashville, Brand New S.T.E.A.M. Lab for 2019-20 school year, daily mindfulness and yoga programs for students and families provided by BeWell Health, Multiple after-school clubs including Art, Choir, and Homework help

FEATURED COMMUNITY PARTNERS

Deloitte, Edgefield Baptist Church, First Church of the Nazarene, Eastwood Christian Church, WeWork

RESOURCES & SUPPORTS

Clothing Closet, Communities in Schools, Vanderbilt Mental Health Services, PBIS



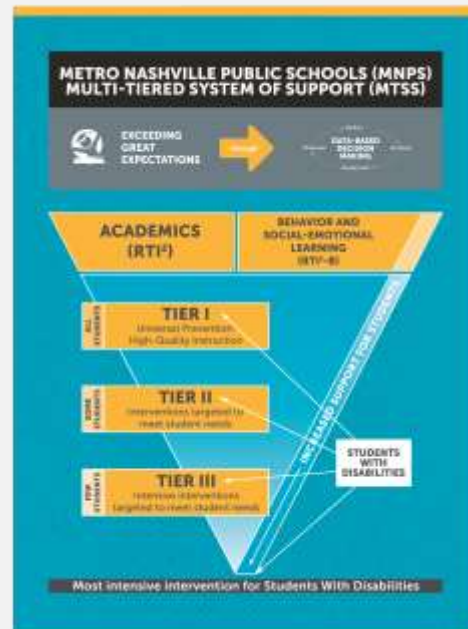
The Metropolitan Nashville Public Schools (MNPS) does not discriminate on the basis of race, religion, creed, sex, gender, gender identity, sexual orientation, national origin, color, age, and/or disability in admission to, access to, or operation of its programs, services, or activities. MNPS does not discriminate in its hiring or employment practices.

MULTI-TIERED SYSTEM OF SUPPORT (MTSS)

Metro Schools knows our students each have a unique set of needs and the teaching and learning in our classrooms must reflect that. Through our Multi-Tiered System of Support (MTSS) framework, educators and administrators have proven tools at their disposal to support a timely and effective response to academic and behavioral needs for each student — meeting the child where they are.

HOW MTSS WORKS

Our school has a dedicated MTSS team, representative of teachers and leaders throughout the building. This team meets to discuss students who may need additional supports and reviews each student’s supporting data. Our MTSS data team meets every five weeks to identify students who may need additional supports and interventions. This team monitors students’ progress and adjusts plans as needed.



MTSS IN ACTION AT WARNER ARTS MAGNET ELEMENTARY SCHOOL

Universal Supports for All Students	Targeted Supports and Interventions	Intensive Supports and Interventions
<ul style="list-style-type: none"> • Clear expectations for daily attendance • School-wide positive behavior expectations • Equitable access to rigorous grade-level, standards-based instruction that is culturally responsive and integrates social/emotional development • Inclusive partnerships with families and communities • Consistent school-wide discipline procedures • Physical activity and nutrition services 		